

# Doors to Wellbeing Presents The Peer Database



DOORS TO  
WELLBEING

**Check It Out!!**

## Peer Specialist Database

Find out how to become a peer specialist  
in all states. (Includes requirements and  
contact info.)

[Explore the Database](#)

## Doors to Wellbeing Presents The Peer Specialist Database State-by-State

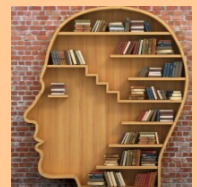
### “How do I become a Peer Specialist?”

Doors to Wellbeing is proud to announce the Peer Specialist Database - The one place where you can find out how to become a peer specialist in your state.

BUT WE NEED YOUR HELP!!!! We conducted extensive research to ensure the information is accurate and up-to-date. But as you know, the information in our field changes rapidly. Look for the "[Update Button](#)" on each page to provide us with updates, BUT WE NEED YOUR HELP!!!! We conducted extensive research to ensure the information is accurate and up-to-date.

Thank you,  
Doors to Wellbeing Staff

Next Steps: We will be expanding our Resource Center to feature current research, literature, tools, links experts and educators. To contribute to those sections in the database: [Click Here!](#) Or contact us at [d2winfo@copelandcenter.com](mailto:d2winfo@copelandcenter.com) or 888-859-61118. ext.214.



This was developed [in part] under grant number SM062557-01 from the Substance Abuse and Mental Health Services Administration (SAMHSA), U.S. Department of Health and Human Services. The views, policies, and opinions expressed are those of the authors and do not necessarily reflect those of SAMHSA or HHS.

